



Wir öffnen  
Welten

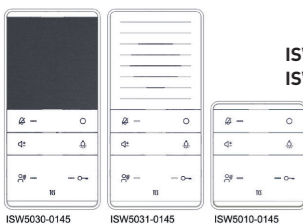


**Requirements to protect against lightning**  
**CAUTION! Device damage due to overvoltage.**  
Secure the low voltage system against overvoltage.

## PRODUCT INFORMATION (brief)

### Audio and Audio PLUS-indoor station Series TASTA

**ISW5010-0145 Audio**  
**ISW5030-0145 Audio PLUS**  
**ISW5031-0145 Audio PLUS**



German / English

## SCOPE OF DELIVERY

- 1 x indoor station
- 1 x mounting tray
- 1 x installation guide
- 1 x user manual (brief)



## NOTES ON THE INSTRUCTION

The installation guide refers exclusively to qualified electricians. Please scan the QR Code for detailed information or go to: [tcsag.de/download](http://tcsag.de/download).

The installation guide contains important notes on the intended use, installation and commissioning of the product. Please keep the installation guide in a suitable place where it can be easily accessed for maintenance and repair works

## SAFETY INSTRUCTION

### General safety instruction

Assembly, installation, commissioning and repair of electronic devices must be carried out by qualified electricians. Observe the latest regulations and standards for system installations.

**WARNING! Danger due to electric shock.**  
Observe the safety regulations according to DIN VDE 0100, when working on main power connections of 230 V.

When installing TCS:BUS systems the general safety regulations for telecommunication systems according to VDE 0800 must be observed. Inter alia:  
> separated cable routing of high and low voltage lines,  
> minimum distance of 10 cm in case of a common cable routing,  
> use of separators between high and low voltage lines within shared cable ducts,  
> use of standard telecommunication lines, e.g. J-Y (St) Y with 0.8 mm diameter,  
> already existing lines (modernisation) with deviating cross-sections can be used in compliance with the loop resistance.

**CAUTION! Not suitable for call systems according to DIN VDE 0834 and 50134.**

The ISW5010-, ISW5030- and ISW5031-0145 does NOT meet the requirements according to DIN VDE 0834 and DIN EN50134. For callers or third parties a more or less imminent danger can occur, if e.g. calls are not signalled or if defects or disturbances are not recognised in time.

- The indoor station must not be used in call systems according to DIN VDE 0834 and EN50134.
- According to DIN 77800, a separate safeguard for emergency call has to be installed.
- A system equipped with this indoor station is not an emergency call system according to the above mentioned standards.
- The indoor station must not be used in life-saving or life-sustaining systems.
- Further the combination of system parts which fulfill the above mentioned standards is not permitted.

## INTENDED USE

ISW5031-0145, ISW5030-0145 and ISW5010-0145 are audio indoor stations for hands free talking. There are suitable for the operation in TCS audio systems and combined audio/video systems. Type of mounting: surface-mount or as table-top device with desktop accessory ZIT5000-0030.

The manufacturer accepts no liability for any uses differing from or exceeding the intended use.

## INDICATION- AND OPERATING ELEMENTS

- Loudspeaker**
- Microphone**
- Function button**  
> send control function 8, send internal call, door release automatic on/off or call diversion on/off configurable
- Light switch button**  
> switch light, send control function 9 or internal call 2  
> ring tone selection: floor call (from flat door)  
> ambient illumination: press for 4 s, to de-/activate
- Door release button**  
> open the door  
> trigger light switch function, if the light switch function is activated in the front-door station  
> quit speaking: voice connection is terminated after 4 sec automatically  
> ring tone selection: door call 1 from front-door station (ring tone <= ring tone AS)
- Indication for door release, blue LED**  
> OFF: door opener in standby  
> ON: door release automatic is activated  
> ON for 3 sec: door will be opened
- Ambient illumination, LED blue**  
> OFF: temporary (manually) or permanently switched off  
> ON: temporary (manually) or permanently switched on  
> blinks: call indication [e.g. door and internal call]
- Call indication, LED green**  
> LED off: in standby  
> LED on: call, speaking activated  
> blinks 3 x: speech channel is busy
- Speech button**  
> shortly press: call acceptance, speaking is activated  
> press for 2 sec: activate simplex communication  
> shortly press: quit speaking  
> shortly press when selecting ring tones: door call 2  
> from the front-door station (ring tone > ring tone AS)

- Volume button**  
> Setting the ring tone volume in 4 steps, when no voice-connection is established.  
> Setting the volume of the voice output in 4 steps when a voice connection is established.
- Smart Slot**  
> For additional signalling of door calls [can be ordered as accessory].
- Call OFF button**  
> shortly press: ring tone mute is activated  
> press for 8 sec: initiate ring tone selection  
> shortly press: quit ring tone selection  
> press for 2 sec: quit (half-)duplex communication
- LED indication (red) ring tone mute**  
> indication call OFF is on: ring tone mute is activated  
> OFF: ring tone mute is deactivated  
> flashes: call diversion is activated, ring tone mute is deactivated  
> LED turns off in longer periods: call diversion is activated, ring tone mute is activated  
**all LEDs:**  
> All LEDs are on: ring tone selection is activated  
> LEDs flashing: device or TCS:BUS error

## MOUNTING AND INSTALLATION

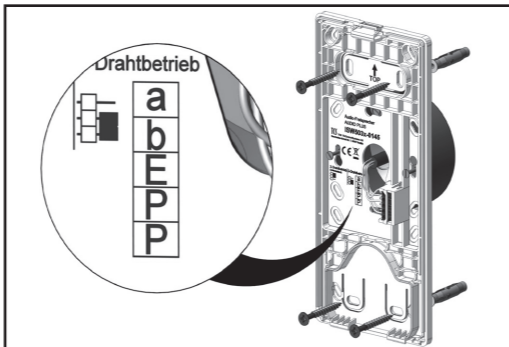
### Mounting height

For an optimal operation, install the indoor station at 1.60 m.

### Install the mounting tray

Observe the installation position of mounting tray. It is marked by an arrow and the designation TOP.

The mounting tray can be installed directly to the wall or on a flush-mount socket.

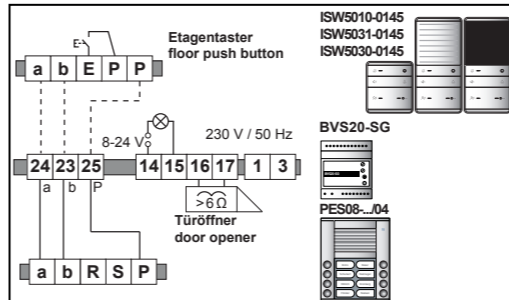


Guide the connection cable through the cable gland. Connect the wires to the terminal (a, b, E, P and P). Fix the mounting tray with suitable screws to the wall or on the flush-mount socket.

**Snap-on the device on the mounting tray**  
Put the device onto both adjustment increments (1). Press the device against the latch until it snaps on (2).  
**Remove the device from the mounting tray**  
Insert a screw driver with slight pressure into the release opening (1). Pull off the device to the front at its upper side. Lift the device out of the adjustment increments (2).

**Connecting the floor push button**  
Connect the floor push button to the terminals E - P an.  
Alternatively you can connect the floor push button to the terminals a - E. Ensure that the a-wire of the control unit is connected to the a-terminal of the indoor station.

## EXCAMPLE CIRCUIT



## COMMISSIONING

Install all devices of the system completely. Check all wire against each other on short-circuit. Switch on the mains power.

**Fault detection and indication**  
Faults are signalled optically and acoustically: constant flashing and when pressing any button, an error tone sounds. The optical error indication stays active until the error is corrected.

- Error tone sounds once long and three times short:**  
> a- and P-wire are interchanged or short-circuited  
> change a- and P-wire or eliminate short-circuit, device is in stand-by mode again
- Error tone sounds once long and twice short:**  
> a-wire is not connected or not supplied  
> connect the a-wire or check power supply, device is in stand-by mode again
- Error tone sounds once long and once short:**  
> button sticks (press longer than 15 sec)  
> remove button at the device or loosen floor push button, device is in stand-by mode again

## BELL BUTTON PROGRAMMING

**Requirements for the programming:**  
> Ensure that the access to the indoor station in the flat is granted.  
> Check if the indoor station is connected to the TCS:BUS.  
> Switch on the mains voltage. The operating LED at the power supply and control unit is on.  
> Check if a programming lock is set. If the programming lock is activated, you cannot program any bell button. To deactivate the programming lock you need a Service Device TCSK or the configuration software configo™.  
> For device-specific indication modes of the front-door station see product information of the front-door station.

- Control unit: Switching on the programming mode of the systems**  
> shortly press the RUN/PROG button <sup>a)</sup>  
> LED blinks  
> programming mode is activated
- Programming via voice connection**  
> press the speech button  
> shortly press the bell button  
> ring tone sounds at the front-door and indoor station <sup>d)</sup>  
> press the speech or door release button
- Control unit: Switching off the programming mode of the system**  
> shortly press the RUN/PROG button  
> LED lights up  
> programming mode is deactivated <sup>e)</sup>

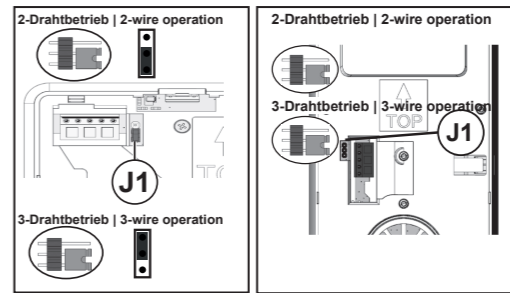
**Deleting bell buttons <sup>b)</sup>**  
> press the bell button that is to be deleted for around 6 sec until an acknowledgement tone sounds <sup>d)</sup>  
> release the bell button  
> previously execute step 1 and then step 3

**NOTES:**  
a) Do not press the RUN/PROG button longer than 5 sec. Otherwise you will activate the light switch function of the front-door station. The bell button cannot be programmed.  
Repair:  
> If the LED blinks, shortly press the RUN/PROG button to deactivate the programming mode.

- > Press the RUN/PROG button only short to activate the programming mode.
- > Programm the bell button
- b) Not necessary, if the bell buttons have not been programmed, see product information of the front-door station.
- c) If there sounds a Prosperr tone (long high tone followed by long low tone) instead, the front-door station is equipped with a programming lock. You can deactivate the programming lock only with the Service Device TCSK or the configuration software configo™.
- Further information (parallel call with only one bell button) can be found in the system manual, in the download area at [www.tcsag.de](http://www.tcsag.de) or by scanning the QR code.

## 2-WIRE/ 3-WIRE OPERATION

- 2-wire operation:**  
> 2-wire operation (delivery state): The jumper J1 is set for 2-wire operation.
- 3-wire operation:**  
> Plug the jumper J1 onto both lower contacts or remove the jumper J1.



ISW5010-0145 | ISW5030-0145 | ISW5031-0145

## PROGRAMMING WITH SERVICE DEVICE TCSK

Function button:	Code
initiate configuration	*95#Ser.-Nr.#
call diversion	*90#Ser.-Nr.#ZielSNr.#
automatic door release	*91#Ser.-Nr.#
intern call	*92#Ser.-Nr.#IntSNr.#
control function 8	*93#Ser.-Nr.#
light switch	*94#Ser.-Nr.# 0 #
search device	*52#
switch ON parallel call	*99#Ser.-Nr.#ParSNr.#
switch OFF parallel call	*99#Ser.-Nr.# 0 #

Light switch button:	Code
intern call 2	*94#Ser.-Nr.#IntSNr.#
control function 9	*95#Ser.-Nr.#
light switch	*96#Ser.-Nr.#

## OPERATION

- accept/quit a call:**  
> Shortly press the speech button to accept the call.  
> Shortly press the speech button again to terminate the conversation.
- Door release:**  
> Shortly press the door release button to open the door. The conversation is terminated automatically after 4 seconds
- Simplex communication de-/activate**  
> Press the speech button for at least 2 seconds after you have accepted the call to activate the function simplex communication.  
> Press the call OFF button to end the simplex communication mode.  
> Press the speech button to speak.  
> Release the speech button to hear your conversation partner.
- Adjust volume**  
Voice output:  
> Repeatedly press the volume button until you have adjusted the required volume for the voice output.  
Ring tone:  
> Repeatedly press the volume button in stand-by-mode. The ring tone sounds in the adjusted volume.
- Ambient illumination ON/OFF**  
> Press the Light switch button longer than 4 s.
- Ring tone selection**

## TECHNICAL SPECIFICATIONS

	ISW5010-0145	ISW5030-0145	ISW5031-0145
Supply voltage (TCS:BUS supply unit)	+24 V ± 8 %	+24 V ± 8 %	+24 V ± 8 %
Input current (2-wire technique)	I(a) 1,90 mA	2,0 mA	2,0 mA
Input current (3-wire technique)	I(a) 0,16 mA I(P_standby) 1,68 mA I(P_max.) 103 mA	0,20 mA 1,80 mA 75,0 mA	0,20 mA 1,80 mA 75,0 mA
Degree of protection	IP30		
Acceptable ambient temperature	- 5 ...+ 40 °C		
Housing	plastics ASA, white glossy		
Dimensions	Height 105 mm Width 94 mm Depth 21 mm (mounting tray)	195 mm	
Weight	105 g	188 g	

> Press the call OFF button for 8 seconds, when no voice connection is established. All LEDs are ON and an acknowledgement tone sounds. The different ring tones can be selected via the different buttons, see indication- and operating elements.  
> Shortly press the call OFF button to end the ring tone selection.

## SPARE PARTS, ACCESSORY

Mounting tray ISW5010-0145	.....ZIA5001-0145
Mounting plate ISW5010-0145	.....ZIA5003-0145
Mounting tray ISW5030/31-0145	.....ZIA5005-0145
Desktop accessory	.....ZIT5000-0030
Radio signal device	.....FFL2200-0
Video-2-wire:BUS-matching resistor	.....0038794

## NOTES

**CONFORMITY**  
Declarations of conformity are available for download at [www.tcsag.de](http://www.tcsag.de). Downloads, trade information.

**INFORMATION ON DISPOSAL**  
Dispose the device separately from domestic waste via a collection point for electronic scrap. Ask your county administration for the responsible collection point.

Dispose the parts of the packaging in collecting tanks for cardboard and paper resp. plastics.

## WARRANTY

We offer a simplified processing in case of warranty for qualified electricians.  
> Please contact the TCS HOTLINE under 4194 9881-188 or [hotline@tcsag.de](mailto:hotline@tcsag.de)  
> Our standard terms and conditions of sale you'll find under [www.tcsag.de](http://www.tcsag.de), Downloads as well as our current product catalogue.

Service  
Please send your questions and inquiries to TCS HOTLINE 04194 9881-188 or [hotline@tcsag.de](mailto:hotline@tcsag.de)

**TCS TürControlSysteme AG**  
Geschwister-Scholl-Straße 7  
D-39307 Genthin  
Telefon: +49 3933 8799-10  
Fax: +49 3933 8799-11  
[www.tcsag.de](http://www.tcsag.de)

**TCS Österreich GmbH**  
Gewerbepark 21  
A-2821 Lanzenkirchen  
Telefon: +43 2627 45266-0  
Fax: +43 2627 45266-20  
[www.tcs-austria.at](http://www.tcs-austria.at)